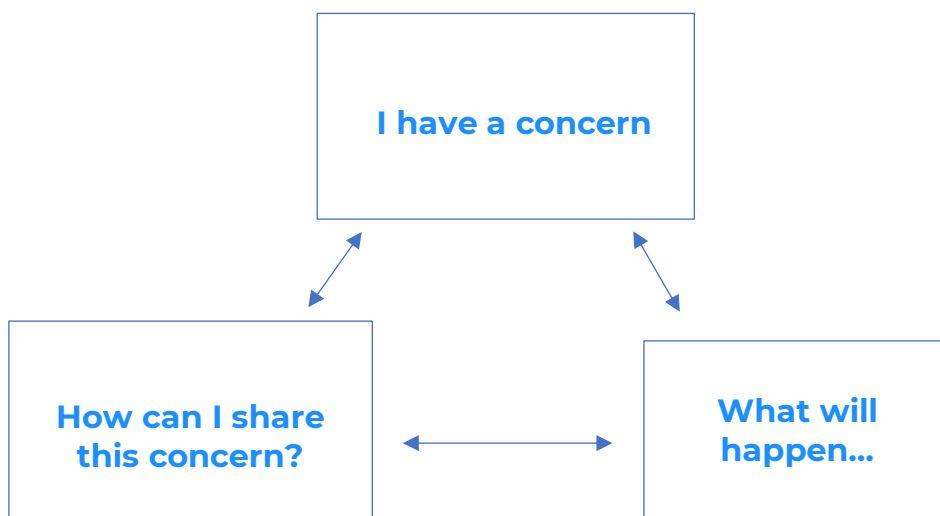


## Using Your Voice:

How Our School Community Will Listen and Support You



In partnership with



## HOW CAN I SHARE MY CONCERN?

Students have two pathways through which they can elect to share their concerns:

**CONFIDENTIAL REPORTING** can be used to share specific concerns that you have about your own safety, well-being, and school life or that of a peer(s) in your community, through talking with a trusted adult or using the seek support and guidance tool on the student voice page.

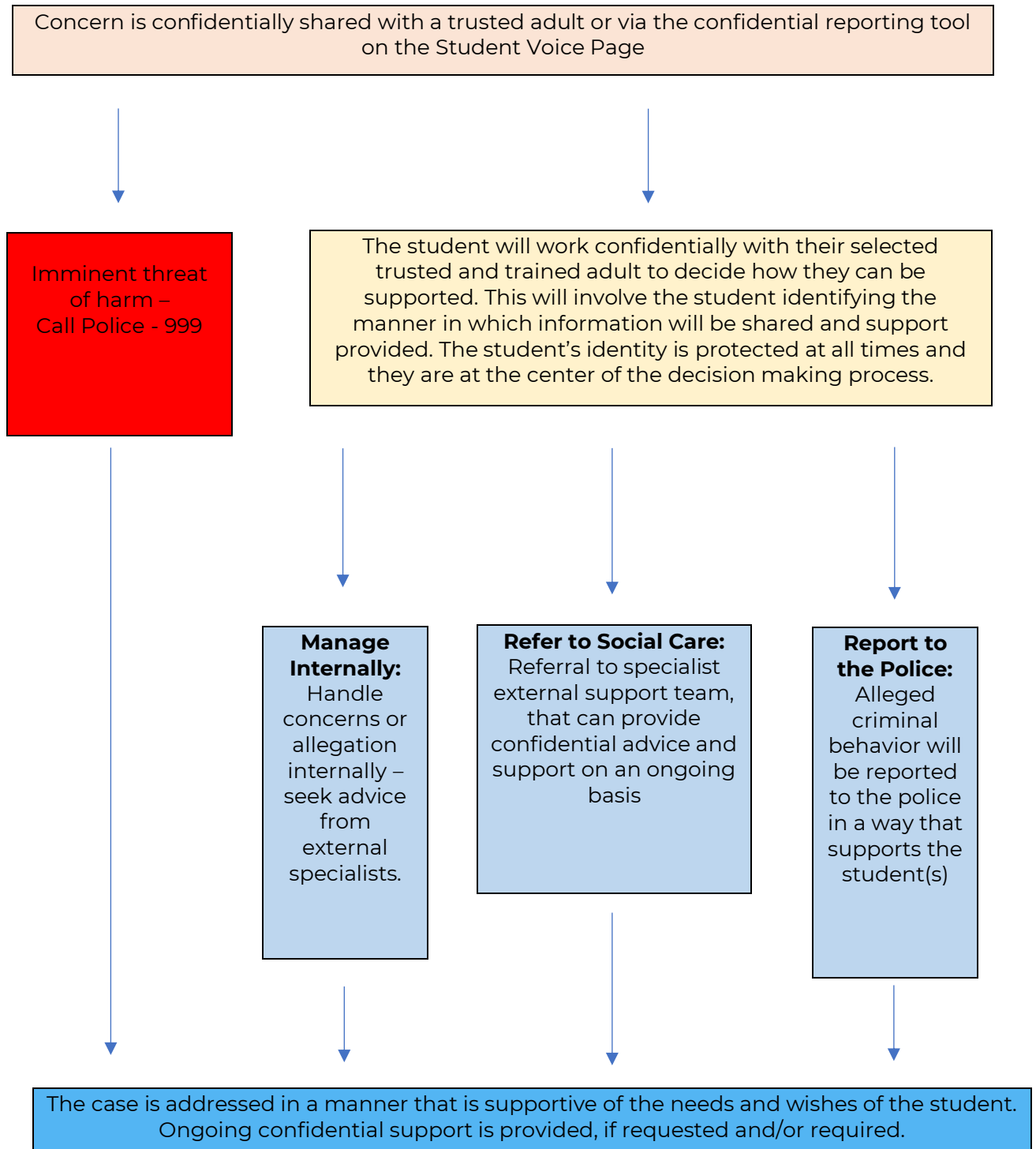
<b>CONFIDENTIAL REPORTING</b> <b>Your identity is safe and protected</b> Seek specific support and guidance through: A trusted Adult in our Community or The Student Voice Page	
<b>The Benefits of Confidential Reporting</b> <ul style="list-style-type: none"><li>- allows us to work with you to identify the best solution</li><li>- means a greater chance of achieving a more successful outcome</li><li>- includes you in the process and puts you in <u>control</u> of how the issue is resolved, inclusive of deciding if/when information is shared with parents/carers</li><li>- allows you to identify the trusted adult with whom you would like to resolve the issue</li><li>- allows you to have a safe, supportive, and confidential conversation with the trusted adult in a format that works for you, i.e., via email, zoom, or face-to-face</li><li>- reduces the opportunity for malicious reports to be made</li></ul>	<b>Things to Think About:</b> <ul style="list-style-type: none"><li>- your confidential report will be initially reviewed by the DSL who is trained to listen to you and support you towards how you would like your concerns to be addressed, including linking you to a trusted adult that you would like to work with. (<a href="#">Student Voice Page only</a>)</li><li>- information will only be shared with your consent, unless there is a risk of harm or harm has taken place in relation to you or others. If that is the case, we are required to share this information, but we will work with you to decide how this is achieved. (<a href="#">Refer to the next pages for guidance as to how this will happen</a>)</li><li>- your identity is known but it remains confidential and protected</li></ul>

**COMMUNITY MAPPING** can be used to share concerns about your school community, culture, and safety through the mapping tools on the student voice page.

<b>COMMUNITY MAPPING</b> <b>You can decide to share your identity or not</b> Share your concerns about our school community through: The Student Voice Page - School, Community, and Discrimination Mapping Tool	
<b>The Benefits of Community Reporting</b> <ul style="list-style-type: none"><li>- allows you to safely share your concerns about our community</li><li>- can help you to manage peer pressure and dominant group cultures that may be a barrier to you sharing concerns</li><li>- helping our school to understand the location, dates, and times when concerns arise will help to make your community safer</li><li>- can give you the confidence to report on a range of issues that you may witness or experience on a regular basis, e.g.,<ul style="list-style-type: none"><li>• Grade 11 students cut the line and intimidate other, younger students during lunchtime</li><li>• I feel unsafe at the local town as students from another school threaten us</li><li>• groups of Grade 10 students are regularly making sexist comments and jokes to Grade 9 girls</li></ul></li><li>- Experience of using the community reporting system may give you confidence to use the confidential system, if you felt the need to do so, in the future</li></ul>	<b>Things to Think About:</b> <ul style="list-style-type: none"><li>- your report will be initially reviewed by the DSL who will work to put in place support measures to address the concerns that you have raised</li><li>- your feedback could really benefit our community and make a real difference in the lives of students in our school</li><li>- your feedback may encourage and inspire other students to use their voice for the betterment of our community</li></ul>

## SPECIALIST SUPPORT:

This flow chart outlines how we will confidentially support you with sensitive concerns which involve instances where harm may have taken place



## OUR TRAINED TEAM IS HERE TO SUPPORT YOU

All of our Senior Leaders also trained to provide support



Steve Bolsover  
DSL

[Stevenb3@campion.warwickshire.sch.uk](mailto:Stevenb3@campion.warwickshire.sch.uk)



Nick Hawkins  
Assistant  
Headteacher- DDSL  
[Nickh1@campion.warwickshire.sch.uk](mailto:Nickh1@campion.warwickshire.sch.uk)



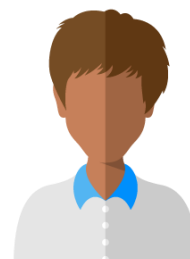
Angela Burdern  
Senior Leader for  
Pastoral  
[Angelab1@campion.warwickshire.sch.uk](mailto:Angelab1@campion.warwickshire.sch.uk)



Louise Farr-Voller  
Associate AHT  
[Louisef1@campion.warwickshire.sch.uk](mailto:Louisef1@campion.warwickshire.sch.uk)



Robert Strain  
Head of 6<sup>th</sup> Form  
[Roberts1@campion.warwickshire.sch.uk](mailto:Roberts1@campion.warwickshire.sch.uk)

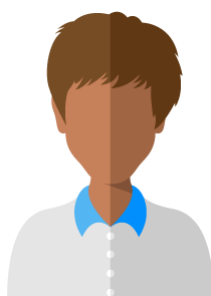


Yvette Brown  
Head of Pegasus  
Mental Health Lead  
[Yvetteb1@campion.warwickshire.sh.uk](mailto:Yvetteb1@campion.warwickshire.sh.uk)



Chris Wills  
Head of Centaur

[Chrisw1@campion.warwickshire.sch.uk](mailto:Chrisw1@campion.warwickshire.sch.uk)



Elizabeth Gayton  
Head of Griffin

[Elizabethg1@Campion.warwickshire.sch.uk](mailto:Elizabethg1@Campion.warwickshire.sch.uk)



Shearon Williams  
Head of Unicorn

[Shearonw1@campion.warwickshire.sch.uk](mailto:Shearonw1@campion.warwickshire.sch.uk)

DSL = Designated Safeguarding Lead  
DDSL = Deputy Designated Safeguarding Lead

## EXTERNAL SUPPORT NETWORKS



 Confidential Helpline: 0808 1000 900



[The Mix](#) – The Mix is the UK's leading support service for young people. You can talk via their online community, on social media, through their free confidential helpline or their counseling service

[Childline](#) – Get help and advice about a wide range of issues, call them on 0800 1111, talk to a counselor online, send Childline an email, or post on the message boards

[Victim Support](#) – An independent charity dedicated to supporting victims of crime and traumatic incidents

[Rape Crisis](#) – Get information, help and support after rape, sexual assault, or sexual abuse

[Stop It Now!](#) (if you are worried about your own thoughts and actions towards others) – Stop It Now! is dedicated solely to preventing child sexual abuse. We are here for anyone with concerns about child sexual abuse and its prevention

[Report Harmful Content](#) (for online harassment) - Helping everyone to report harmful content online

[Internet Watch Foundation](#) - Helping victims of child sexual abuse worldwide by identifying and removing online images and videos of their abuse

[Kooth](#) - Kooth is commissioned by the NHS to provide anonymous and personalised mental health support for Children and Young people.

[Shout](#) - Shout is the UK's first and only free, confidential, 24/7 text messaging support service for anyone who is struggling to cope.

